



2D MACHINE CONTROL AND CONSTRUCTION LASER SOLUTIONS



The Intersection of Infrastructure and Technology

Many companies are at the crossroads of growing infrastructure demands and having the technology to meet them. It's a growth opportunity for any company willing to adopt the new technologies needed to stay competitive.

Integrate the right digital solutions for you and your company. Together, we can efficiently build the infrastructure needs of today and tomorrow.

2D Machine Control and Construction Laser Solutions

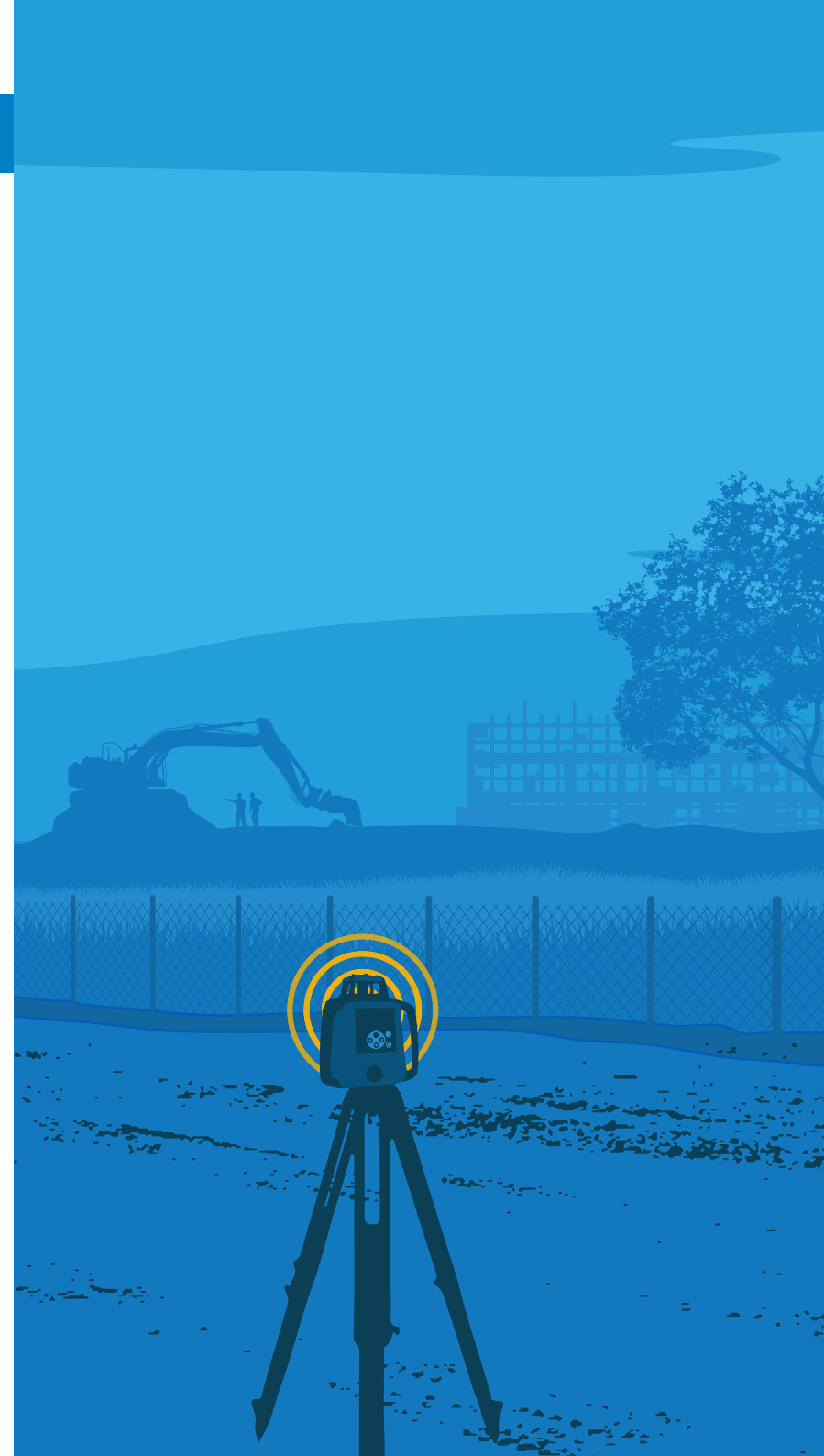
Keep your projects on time and under budget. We have the leading-edge hardware, software, and mobile solutions you need to increase efficiency, improve accuracy, and better manage resources.

Our extensive industry knowledge and expertise help you get the job done right and stay on top. Get accurate, flexible 2D construction solutions that help you:

- Broaden your scope of work
- Increase site safety
- Become more efficient on grading projects

We offer a range of options for 2D construction including general building, excavation, dozing, grading, and paving control. Our systems easily guide you to grade through advanced technology. With the option to promote your system to full 3D functionality at any time, you can easily add on new components as you expand.

Most importantly, you get peace of mind. All of our products are rigorously tested and easy to use, so you're up to speed quickly and keep going even in the most challenging of settings.







General Building Construction

Your success is based on productivity, accuracy, and coordination and that's what we deliver. With beam control that locks onto signals automatically for hands-free operation, easily complete measurements and avoid costly revisits by getting it right the first time.

Easily correct elevation, slope, and alignment for maximum quality with our laser technology. You'll always maintain the highest level of accuracy on various project sites with built-in quality control every step of the way.





2D Excavator Control

Eliminate over and under excavation and control material usage, saving time and money. Our systems help you excel in trenching for utilities, cutting slopes, making grades for building pads, and a variety of other construction applications.

With our excavator systems you're able to visually verify correct elevation and slope information at all times. Increase your productivity while your work hours, fuel costs, and wear and tear on machines decrease. You'll also reduce material waste — no more having to backfill or bring in extra bedding material to compensate for over-excavation.

With the future in mind, all of our 2D systems are upgradeable so it's an investment that will grow with you. You'll be ready to tackle 3D jobs when needed.





2D Dozer and Motor Grader Control

Tackle sites with slopes and flat areas for building pads and road construction with our tried-and-true 2D components such as sonic trackers and lasers. Accurately cut any job design and easily manage material for initial rough grading with dozers and scrapers. Or finesse final grading and control your cutting edge with high vertical accuracy.

For full efficiency and productivity, all of our 2D and 3D systems share the same components. So upgrading as your needs change is affordable and doesn't require having to learn an entirely new system.





2D Paver Control

Helping you make high-quality roads has been our specialty for more than 25 years, and our 2D paving solutions produce a polished finish every time — pave miles of perfectly smooth highway, overlay an existing road, or complete a small parking lot job.

Our Sonic Tracker technology, a world's first, makes tracking curbs and matching joints visual and easy. The long tradition of innovation we've built continues with our rugged, field-proven systems. Featuring durable and time-tested components such as Sonic Trackers, cross slope sensors, control boxes, and the Trackerjack laser receiver, they're the new standard for asphalt paver systems.



High-performance Positioning

We have a laser to match all of your job site needs, from layout to grade control. Get the maximum impact and value through advanced technology, state-of-the-art accuracy, and exceptional range capabilities.

Choose from our world-class lasers to find the best fit for you. Our innovative product line includes the world's first Green Beam® laser, the world's first Smart Line® auto alignment system, and the world's first millimeter accurate zone laser.

All of our laser transmitters are easy to use, durable, and backed by our best in the industry five-year guarantee.

RL-H5A/5B Multi-purpose Laser

These workhorses of our fleet continue to set the standard for self-leveling general construction lasers. Grading, excavating and general construction projects are ideal for this series of lasers.

- Elevation alert
- Automatic self-leveling
- RL-H5A includes a manual slope capability

RL-SV1S/2S Single/Dual Slope Lasers

The versatile RL-SV series of construction lasers offers both single and dual slope options. Perfect for horizontal and sloping applications. Supports slopes up to +/- 5%.

- Horizontal single slope
- Dual slope option (RL-SV2S only)
- Full-function remote control



RL-200 1S/2S High-accuracy Slope Laser

Our RL-200 series is easy to operate, with a rugged, lightweight, and compact housing. These high-accuracy lasers provide twice the power at an affordable price.

- Wide grade range (up to 25% slope)
- Increased working diameter – 1100 meters
- IP66 environmental rating



RL-VH4DR Interior Laser

Dependable, accurate, and affordable, the RL-VH4DR is where value and ease come together.

- Horizontal and vertical orientation
- Autoscan beam control
- Remote control capabilities



TP-L5 Series Pipe Lasers

This series of alignment lasers brings more to the table than any other offering in the market. Excels at “in-the-trench” or “over-the-top” alignment methods for sanitary and storm sewer lay-down projects. Available in 5 configurations of the following features to match your needs exactly:

- Either ultra-visible Green Beam® technology or standard red laser
- Smart Line® auto-alignment system (option)
- Built-in vertical plumb beam (option)



LS-B100, LS B10/10W, LS-B110/110W Laser Sensors

Our machine laser receivers and remote displays are value-priced grade control solutions for indicate and machine control capability for smaller machines like backhoes, mini-excavators, and full-size dozers and scrapers. A family of laser sensors with different options available for each product such as:

- Rugged, waterproof design
- Coarse to fine grade checking
- 0° - 360° detection options
- Red and green LED indicators
- Plumb/tilt indication
- On-grade matching



Ultimate 2D Control

Get the ultimate in machine control technology with a full line of affordable options.

Outfit your finishing machines or dozers and scrapers. Increase the productivity of a box blade or skid steer. The options for improving grade control are limitless.

Each solution provides unmatched precision, increased quality, and confidence. These 2D machine control components share the same foundation as our 3D machine control solutions, so you're able to quickly upgrade at minimal cost and with no learning curve.

GX-55/75

Tactile Control Boxes

High-quality machine control graphical displays in two size formats. The smaller GX-55 conserves space in smaller congested machine cabs; while the larger GX-75 provides more viewable screen area. They can both handle rugged field conditions while displaying location of the machine, bucket, etc. as well as project design information.

- Sunlight-viewable, color, touch screen LCDs
- 6.5 inch (GX-55) or 10 inch (GX-75)
- Integrated grade indicator LEDs
- Weather protected USB port



9164 Box

Multi-machine Rugged Display

A proven go-getter, this control box can be used for various applications. Whether running a dozer, grader, scraper, or paver, this controller makes any machine more productive.

- Easily upgradeable
- Bright LCD screen
- Easy interface



GC-35

Paver Control Interface

With an IP67 environmental rating, this 2D asphalt paver control box is rugged and waterproof.

- Backward compatible with System Five box
- Easy performance menu
- Operate both sides of the screed from one controller



ST-3

Sonic Tracker Sensor

This proven Sonic Tracker sensor saves time on large asphalt paving jobs offering doubled detection speeds along with a smooth and fast response.

- IP67 environmental rating
- Flat detection range on stringline
- Side way offset indication



Sensor

Paving Slope Sensor

Our dual port slope sensor improves accuracy over an extended temperature range. Exclusive antishock ceramic technology makes this one of the most reliable measuring slope sensors available.

- Rugged cast housing
- Insensitive to vibration
- Higher accuracy



TS-i3

Versatile Machine Control Sensor

The ruggedized and versatile TS-i3 slope sensors are available in single and dual-slope configurations. They are utilized on boom, stick, bucket, blade and body locations to support various machine control configurations. The newest, 500 kbps baud rate versions provide even faster response times and can “future-proof” your purchases in support of any new capabilities.

- Rugged cast housing
- Small form-factor
- Bolt on/off convenience
- Temperature and vibration tolerant
- IP68, IP69k dust/water ratings





RL-SV1S/2S

General Single and Dual Slope Lasers

The versatile RL-SV series of construction lasers offers both single slope (RL-SV1S) and dual slope (RL-SV2S) options. Perfect for horizontal and sloping applications. Supports slopes up to +/- 5%. With an operating range of over 800 meters (2,600+ feet) in diameter, the RL-SV series of lasers have the power to cover even the largest projects backed by an industry leading five-year warranty.

With an IP66 rating, the RL-SV series is "job site tough" to withstand dust and is waterproof even in torrential rainfall. Its reliable accuracy makes the RL-SV series a good choice for virtually any general construction project, including flat plane and sloping jobs.

- Long-range operations with 800 meters (2,600+ ft.) diameter of operation
- Single and dual sloping capabilities
- Extended battery life at up to 120 hours
- Tough IP66 construction rating
- Full-function remote control





TP-L5 Series

Pipe Lasers

This series of alignment lasers offers a unique combination of features and technology that are proven to meet the demands of contractors better than any other offering in the market. These alignment lasers excel at “in-the-trench” or “over-the-top” alignment methods for Sanitary Sewer and Storm Sewer lay down projects. No matter your application, the TP-L5 series is the industry standard. One of the powerful features is our patented Green Beam® technology which provides the brightest, most visible laser beam available. Its easily viewable even in the brightest outside conditions. The RC-200 remote puts all the features at your fingertips whether you’re near the laser or more than 200 meters (650+ ft.) away. Accelerate production by making setup and alignment automatic.

The world’s most accurate pipe grading and leveling solution, delivered in a tough cast aluminum housing and available in five configurations to match your needs exactly.

- World’s first ultra-visible Green Beam® technology or standard red laser
- World’s most accurate Smart Line® auto-alignment system (option)
- Built-in vertical plumb beam (option)





X-52x Excavator System

2D Machine Control System

This streamlined and modern excavation system that gets you to grade as a cost effective 2D solution. Our rugged LS-B10W laser receiver combined with compact TS-i3 tilt sensors lets you stay on grade without having to ever re-string. The GX-55 control box actively guides your bucket where it needs to be – increasing your productivity so you can be ahead of schedule.

The X-52x excavator system gives you the flexibility to use a wide array of references to work from: existing surface, a hub, a previous cut, or a rotating laser. Simply choose your reference and enter a cut and/or slope depth for immediate results.

- Increase productivity
- Work from an existing elevation or laser
- Create, cut and check complex design from the cab
- Lightbar grade for visual guidance
- Future proof components ready for future enhancements
- Easily upgradeable to full 3D solution
- Improves job safety





P-32 Paving System

Paver Control Interface and Sonic Tracker Sensor

Control both sides of the screed with a digital LCD display using clear grade and function icons. A rugged, field-proven system with component reliability for more than 25 years, our P-32 paving system builds on technology from our previous System Five configuration, and works with most full-size asphalt pavers.

When paired with a Sonic Tracker and slope sensor, the GC-35 controller works with a variety of paving and milling machines. You can tackle any 2D asphalt paving job with the industry's premier non-contacting screed control system in a reliable, fully-featured package.

- 3.5 inch color LCD
- Compatible with previous generation System Five configurations
- IP67 environmental rating
- Rugged cable design with strong strain relief
- Operate two sides of the screed from one controller



TEREX

TEREX



Easy To Upgrade

Our 2D machine control solutions ensure your major investment in construction technology is a wise decision by allowing you to easily add components to upgrade to a full 3D system while still utilizing the existing components of your 2D system. You'll even have "future-proof" protection, being ready for upgrades once they become available. All the while, you'll still benefit from the same intuitive software interface across all machine types, keeping learning curves down and profits margins up.

Upgrading to 3D offers you features such as:

- Constant real-time positioning anywhere on the globe
- Automatic operations on many types of equipment
- Faster, more accurate grading, digging, etc.
- Future-proof components





Training and support

myTopcon provides direct access to a comprehensive library of training and support content available in a mobile friendly format. With single sign-on access you can browse by product for informative quick guides and training video content.

View the latest webinar or E-learning to advance your professional knowledge and stay on top of the productive digital workflows that advance your business. Visit mytopcon.com today.

Available materials



Quick Guides



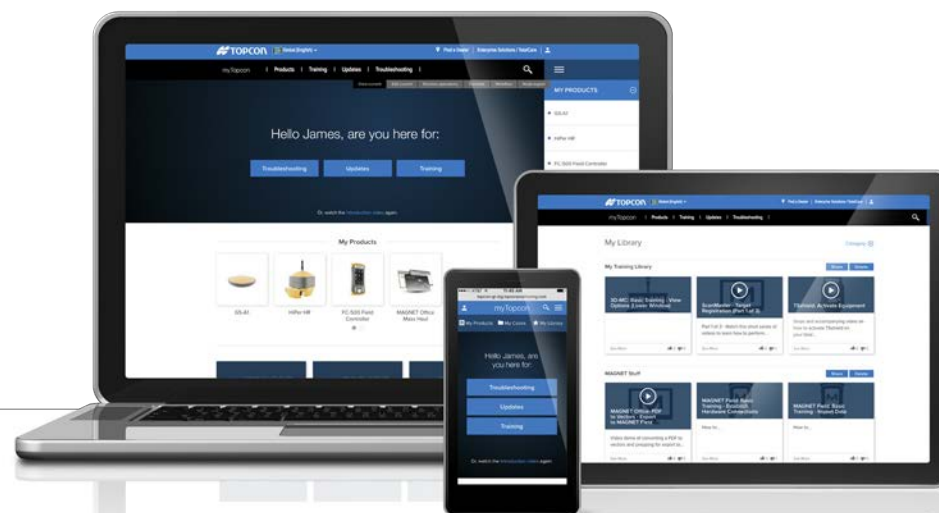
Product videos



Instructional webinars



E-learning





www.topconpositioning.com

STAR EQUIPMENT, LTD.

1401 2nd Avenue, Des Moines, IA 50314
(515) 283-2215 (800) 369-2215
2950 6th St. SW, Cedar Rapids, IA 52404
(319) 365-5139 (800) 728-5139
2625 W. Airline Hwy., Waterloo, IA 50703
(319) 236-6830 (800) 791-9249
2100 E. Lincoln Way, Ames, IA 50010
(515) 233-9500 (866) 856-2312
Website: www.starequip.com